

**ATCP – 160.66 CULTURAL ARTS –
DEPARTMENT 18**

**Judging: Wednesday – 9:00am
Exhibition Hall**

**Adult Superintendents: Roxanne Klossner &
Michelle Schieldt**

Exhibitors and their families are responsible for reading and complying with the Junior Fair General Rules & Instructions.

Fair Association not responsible for exhibits lost/stolen during fair.

All exhibitors are encouraged to be present for judging.

Premiums \$ 2.00 \$ 1.75 \$ 1.50 \$ 1.25

Rules and Instructions

- a) Members must list on entry tag (at fair) the number of years they have participated in specific project.
- b) Exhibits must be result of exhibitor project for this year.
- c) No exhibits made from kits will be accepted – unless specifically stated.
- d) Include a description card for all classes
- e) If your exhibit is to be hung, please include **adequate hanger.**



CLASS A – LEATHERCRAFT, Gr. 3-8

- a) Include a description card telling technique used, time involved and intended use.
- b) Permanently date each item (month and year)

Lot

1. Stamped and/or carved item
2. Stamped and/or carved item from a kit
3. Sculpted/molded leather item
4. Any other article not covered above

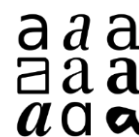
CLASS B – LEATHERCRAFT, Gr. 9 and up

- a) Include a description card telling technique used, time involved and intended use.
- b) Permanently date each item (month and year)

Lot

Conference Judging

10. Stamped and/or carved item
11. Stamped and/or carved item from a kit
12. Sculpted/molded leather item
13. Any other article not covered above



CLASS C – PRINTING, Gr. 3-6

- a) Include a description card explaining work done, technique used and time involved.
- b) Entries on paper – 4 copies of each with the same design
- c) Permanently date each item (month and year)
- d) Limit of 2 entries

Lot

30. Original arrangement using purchased stencils – 1 article
31. Original arrangement using hand cut stencils, include stencils – 1 article
32. Any other stenciled article not mentioned above
33. Block Printing – 3 articles of different or same design
34. Any printing technique on paper
35. One silk screened article

CLASS D – PRINTING, Gr. 7 and up

- a) Include a description card explaining work done, technique used and time involved.
- b) Entries on paper – 4 copies of each with the same design
- c) Permanently date each item (month and year)
- d) Limit of 2 entries

- Lot **Conference Judging**
36. Original arrangement using purchased stencils – 1 article
 37. Original arrangement using hand cut stencils, include stencils – 1 article
 38. Any other stenciled article not mentioned above
 39. Items made from originally drawn stencil made by member, include stencils
 40. Block Printing – 3 articles of different or same design
 41. Any printing technique on paper
 42. One silk screened article



CLASS E – DRAWING AND PAINTING, Gr. 3-6

- a) ONLY open to members enrolled in Drawing & Painting or Arts & Crafts.
- b) All work must be original.
- c) Drawings and paintings must be matted and have a firm backing with a secure hanger. Frames are optional. (Inadequate hangers may receive a lower premium)
- d) All drawings and paintings must be signed and dated (month and year) by the artist.
- e) Copywritten materials may be entered only in designated classes.
- f) Include a description card –
 - A. Tell where you got idea (including photo, clipping, etc. if available)
 - B. Explain procedure used.
- g) Chalk and pencil drawings should be sprayed to prevent smudging.
- h) No plastic or glass covering to be used when being judged.
- i) Limit to 2 entries.

- Lot **Conference Judging**
50. One drawing – pencil (black and white)
 51. One drawing – pencil (colored)
 52. One drawing – charcoal or pastels
 53. One drawing – crayon
 54. One painting – watercolor or tempera
 55. One drawing or painting of copywritten item (include original or photos of original)
 56. Any other media

CLASS F – DRAWING AND PAINTING, Gr. 7-9

- a) ONLY open to members enrolled in Drawing & Painting or Arts & Crafts.
- b) All work must be original.
- c) Drawings and paintings must be matted and have a firm backing with a secure hanger. Frames are optional. (Inadequate hangers may receive a lower premium)
- d) All drawings and paintings must be signed and dated (month and year) by the artist.
- e) Copywritten materials may be entered only in designated classes.
- f) Include a description card –
 - C. Tell where you got idea (including photo, clipping, etc. if available)
 - D. Explain procedure used.
- g) Chalk and pencil drawings should be sprayed to prevent smudging.
- h) No plastic or glass covering to be used when being judged.
- i) Limit to 2 entries.

- Lot
60. One drawing – pencil (black and white)
 61. One drawing – pencil (colored)
 62. One drawing – charcoal or pastels
 63. One drawing – crayon
 64. One painting – watercolor or tempera
 65. One painting – oil or acrylic used as an oil (matting not required)
 66. One drawing or painting of copywritten item (include original or photos of original)
 67. Any other media

CLASS G – DRAWING AND PAINTING, Gr. 10 and up

- a) ONLY open to members enrolled in Drawing & Painting or Arts & Crafts.
- b) All work must be original.
- c) Drawings and paintings must be matted and have a firm backing with a secure hanger. Frames are optional. (Inadequate hangers may receive a lower premium)
- d) All drawings and paintings must be signed and dated (month and year) by the artist.
- e) Copywritten materials may be entered only in designated classes.
- f) Include a description card –
 - E. Tell where you got idea (including photo, clipping, etc. if available)
 - F. Explain procedure used.
- g) Chalk and pencil drawings should be sprayed to prevent smudging.
- h) No plastic or glass covering to be used when being judged.
- i) Limit to 2 entries.

Lot

70. One drawing – pencil (black and white)
71. One drawing – pencil (colored)
72. One drawing – charcoal or pastels
73. One painting – watercolor or tempera
74. One painting – oil or acrylic used as an oil (matting not required)
75. One drawing or painting of copywritten item (include original or photo of original)
76. Any other media



CLASS H – CERAMICS, Gr. 3-6

- a) ONLY open to members enrolled in Ceramics or Arts & Crafts.
- b) Exhibits must be member's own work.
- c) A description card must be attached to each entry stating the technique used.

- d) All entries must have initials and date put on bottom before first firing. Do not cover bottom with felt.
- e) Entries will be exhibited without flower arrangements or plants. Do not decorate with ribbons, moss, etc.
- f) Plaster of Paris items will not be accepted.
- g) Limit of 3 entries.

Lot

80. Fired – Specialty glazes (i.e. crystal, dimensional, texture, etc.)
81. Fired One Stroke and Underglaze
82. Fired – Plain glaze (all one color)
83. Fired – Over glazed item (i.e. mother of pearl, fired gold, etc.)
84. Fired – multiple glaze
85. Glaze and Staining techniques – multiple
86. Non-fired – plain acrylic stain or pearl stain
87. Non-fired – antiqued or drybrush with translucent stain
88. Non-fired – drybrush with acrylic stain
89. Non-fired – multiple staining techniques
90. Non-fired – textured or velvet finishes
91. Decal class
92. Hand Built
93. Wheel Thrown
94. Any other media

CLASS I – CERAMICS, Gr. 7-9

- a) ONLY open to members enrolled in Ceramics or Arts & Crafts.
- b) Exhibits must be member's own work.
- c) A description card must be attached to each entry stating the technique used.
- d) All entries must have initials and date put on bottom before first firing. Do not cover bottom with felt.
- e) Entries will be exhibited without flower arrangements or plants. Do not decorate with ribbons, moss, etc.
- f) Plaster of Paris items will not be accepted.
- g) Limit of 3 entries.

- Lot
100. Fired – Specialty glazes (i.e. crystal, dimensional, texture, etc.)
 101. Fired One Stroke and Underglaze
 102. Fired – Plain glaze (all one color)
 103. Fired – Over glazed item (i.e. mother of pearl, fired gold, etc.)
 104. Fired – Multiple glaze
 105. Glaze and Staining techniques – multiple
 106. Non-fired – plain acrylic stain or pearl stain
 107. Non-fired antiqued or drybrush with translucent stain
 108. Non-fired – drybrush with acrylic stain
 109. Non-fired – multiple staining techniques
 110. Non-fired – textured or velvet finishes
 111. Decal Class
 112. Hand Built
 113. Wheel Thrown
 114. Any other media

CLASS J – CERAMICS, Gr. 10 and up

- a) **ONLY open to members enrolled in Ceramics or Arts & Crafts.**
- b) Exhibits must be member's own work.
- c) A description card must be attached to each entry stating the technique used.
- d) All entries must have initials and date put on bottom before first firing. Do not cover bottom with felt.
- e) Entries will be exhibited without flower arrangements or plants. Do not decorate with ribbons, moss, etc.
- f) Plaster of Paris items will not be accepted.
- g) Limit of 3 entries.

Lot **Conference Judging**

120. Fired – Specialty glazes (i.e. crystal, dimensional, texture, etc.)
121. Fired One Stroke and Underglaze
122. Fired – Plain glaze (all one color)
123. Fired – Over glazed item (i.e. mother of pearl, fired gold, etc.)
124. Fired – Multiple glaze
125. Glaze and Staining techniques – multiple
126. Non-fired – plain acrylic stain or pearl stain

127. Non-fired antiqued or drybrush with translucent stain
128. Non-fired – drybrush with acrylic stain
129. Non-fired – multiple staining techniques
130. Non-fired – textured or velvet finishes
131. Decal Class
132. Hand Built
133. Wheel Thrown
134. Any other media

CLASS K – OTHER CRAFTS, Gr. 3-6

- a) **ONLY open to members enrolled in Arts & Crafts.**
- b) All arts and crafts members may enter three (3) from the following.
- c) All clothing items must have a hanger.
- d) Please include a descriptive card stating the technique used.

Lot

140. Design in appliqué
141. Design in counted cross stitch (May use graph or kit). Must be framed and matted appropriately, **BUT** back must be open for judging. Must include description of how it will be finished.
142. Design in any other type of stitchery (May use graph or a kit.) Must be framed and matted appropriately, **BUT** back must be open for judging. Must include description of how it will be finished.
143. Basic Design exhibit: Cut out shapes to make a design
144. Design in weaving
145. Design in batik or tie-dying
146. Design in sculpture
147. Design on any article of clothing using any form of paint
148. Sculpture made from recycled material
149. Model car/truck from kit – must be glued & painted
150. Any other article
151. China Painting – 1 or 2 pieces
152. Design of macramé
153. Any other jewelry item
154. Scrapbook
155. Any handwoven basketry item

CLASS L – OTHER CRAFTS, Gr. 7-9

- a) ONLY open to members enrolled in Arts & Crafts.
- b) All arts and crafts members may enter three (3) from the following.
- c) All clothing items must have a hanger.
- d) Please include a descriptive card stating the technique used.

Lot **Conference Judging**

- 160. Design in appliqué
- 161. Design in counted cross stich (May use graph or kit). Must be framed and matted appropriately, **BUT** back must be open for judging. Must include description of how it will be finished.
- 162. Design in any other type of stitchery (May use graph or a kit.) Must be framed and matted appropriately, **BUT** back must be open for judging. Must include description of how it will be finished.
- 163. Basic Design exhibit: Cut out shapes to make a design
- 164. Design in weaving
- 165. Design in batik or tie-dying
- 166. Design in sculpture
- 167. Design on any article of clothing using any form of paint
- 168. Sculpture made from recycled material
- 169. Model car/truck from kit – must be glued & painted
- 170. Any other article
- 171. China Painting – 1 or 2 pieces
- 172. Design of macramé
- 173. Any jewelry item
- 174. Scrapbook
- 175. Any handwoven basketry item

CLASS M – OTHER CRAFTS, Gr. 10 and up

- a) ONLY open to members enrolled in Arts & Crafts.
- b) All arts and crafts members may enter three (3) from the following.
- c) All clothing items must have a hanger.
- d) Please include a descriptive card stating the technique used.

Lot

- 180. Design in appliqué
- 181. Design in counted cross stich (May use graph or kit). Must be framed and matted appropriately, **BUT** back must be open for judging. Must include description of how it will be finished.
- 182. Design in any other type of stitchery (May use graph or a kit.) Must be framed and matted appropriately, **BUT** back must be open for judging. Must include description of how it will be finished.
- 183. Basic Design exhibit: Cut out shapes to make a design
- 184. Design in weaving
- 185. Design in batik or tie-dying
- 186. Design in sculpture
- 187. Design on any article of clothing using any form of paint
- 188. Sculpture made from recycled material
- 189. Model car/truck from kit – must be glued & painted
- 190. Any other article
- 191. China Painting – 1 or 2 pieces
- 192. Design of macramé
- 193. Any jewelry item
- 194. Scrapbook
- 195. Any handwoven basketry item



**4-H Performing & Visual Arts Contest
Saturday, April 6 – 1:00pm
Juda School**

Premiums \$ 2.00 \$ 1.75 \$ 1.50 \$ 1.25

- a) **ONLY** open to members enrolled in Music.
- b) To be eligible for County Fair premium, exhibitors must perform the music entry to the 4-H Performing & Visual Arts Contest, AND perform the same music entry for an audience at the County Fair. Exhibitors will schedule their performance with the Extension summer intern.

**CLASS N – SOLO MUSIC PERFORMANCE,
Gr. 3-5**

- Lot **Conference Judging**
- 205. Solo Vocal Performance
 - 206. Solo Instrumental Performance
 - 207. Solo Dance Performance

**CLASS O – SOLO MUSIC PERFORMANCE,
Gr. 6-8**

- Conference Judging**
- 208. Solo Vocal Performance
 - 209. Solo Instrumental Performance
 - 210. Solo Dance Performance

**CLASS P – SOLO MUSIC PERFORMANCE,
Gr. 9 and up**

- Conference Judging**
- 211. Solo Vocal Performance
 - 212. Solo Instrumental Performance
 - 213. Solo Dance Performance

**CLASS Q – GROUP MUSIC PERFORMANCE,
Gr. 3-13**

Conference Judging

- 214. Group Vocal Performance
- 215. Group Instrumental Performance
- 216. Group Dance Performance

CLASS R – MUSIC DISPLAYS, Gr. 3-13

**Judging: Wednesday of Fair Week – 9:00am
Exhibition Hall**

- a) **ONLY** open to members enrolled in Music.

- Lot
- 220. Scrapbook of Music Activities (may include school concerts, talent shows, dance activities, performing arts performances, etc.)
 - 221. Report on any aspect of music (may include composer, kind of musical instrument, type of music, musical artist, etc.)
 - 222. Song written by member (lyrics and/or melody)



CLASS S – DRAMA, Gr. 3-8

ONLY open to members enrolled in Theatre Arts.

Guidelines:

Youth may enter the following lots with each being judged prior to the fair. Members having an entry in any of the lots must provide a description card explaining the work done and sources of help, number of years involved in the drama project and grades as of January 1. Members may bring photos or sample videos, where appropriate.

Premiums: \$ 2.00 \$ 1.75 \$ 1.50 \$ 1.25

Lot	Conference Judging
230.	Costume or staging made by member (attach photos)
231.	Play or skit script written by member
232.	Handmade and/or hand painted mask
233.	Any other drama exhibit

CLASS T – DRAMA, Gr. 9 and up

ONLY open to members enrolled in Theatre Arts.

Guidelines:

Youth may enter the following lots with each being judged prior to the fair. Members having an entry in any of the lots must provide a description card explaining the work done and sources of help, number of years involved in the drama project and grades as of January 1. Members may bring photos or sample videos, where appropriate.

Lot	Conference Judging
240.	Costume or staging made by member (attach photo)
241.	Play or skit script written by member
242.	Handmade and/or hand painted mask
243.	Any other drama exhibit